

# Protective Clothing

## List of Products

- Coveralls
- Jackets
- General Workwear
- Reflective Workwear
- Workwear Customization

maxiFlex  
CE  
EN 14111  
EN 14122  
EN 14123  
EN 14124  
EN 14125  
EN 14126  
EN 14127  
EN 14128  
EN 14129  
EN 14130  
EN 14131  
EN 14132  
EN 14133  
EN 14134  
EN 14135  
EN 14136  
EN 14137  
EN 14138  
EN 14139  
EN 14140  
EN 14141  
EN 14142  
EN 14143  
EN 14144  
EN 14145  
EN 14146  
EN 14147  
EN 14148  
EN 14149  
EN 14150  
EN 14151  
EN 14152  
EN 14153  
EN 14154  
EN 14155  
EN 14156  
EN 14157  
EN 14158  
EN 14159  
EN 14160  
EN 14161  
EN 14162  
EN 14163  
EN 14164  
EN 14165  
EN 14166  
EN 14167  
EN 14168  
EN 14169  
EN 14170  
EN 14171  
EN 14172  
EN 14173  
EN 14174  
EN 14175  
EN 14176  
EN 14177  
EN 14178  
EN 14179  
EN 14180  
EN 14181  
EN 14182  
EN 14183  
EN 14184  
EN 14185  
EN 14186  
EN 14187  
EN 14188  
EN 14189  
EN 14190  
EN 14191  
EN 14192  
EN 14193  
EN 14194  
EN 14195  
EN 14196  
EN 14197  
EN 14198  
EN 14199  
EN 14200



# Protective Clothing

## FLASHGUARD® TM

Lightweight and comfortable, inherently flame-resistant fabric



### Inherent FR Fabric FABRIC CODE 11

Weight	Greige 197 g/m (5.8 oz./yd) Finished 220 g/m (6.5 oz./yd)
Blend	48% Tencel, 39% Modacrylic, 12% Aramid, 1% Carbon
Weave	Twill

### COMPLIANCE

Heat and Flame	EN ISO 11612 A1 + A2, B1, C1 (single layer) and A1 + A2, B2, C2, F2 (multi-layer) insulated garments
Flashfire	NFPA 2112 UL Recognized Component
Electric Arc Flash	IEC 61482-1-2 (class 1) ASTM F1959 ATPV 9.1 cal/cm2 (HRC 2)
Anti-static	EN 1149-5
Oeko-Tex®	Oeko-Tex® Standard 100 (sets limits for maximum content of formaldehyde, pesticides, PCBs, heavy metals, azo dye, arylamine flame-retarding agents, phthalates, volatile organic substances, biocides and other substances.)
Welding and Allied Processes Protection	EN ISO 11611 (class 1)

**STANDARD COLORS** Please confirm availability with your Red Wing representative. Special order colors available upon request.

### WASH AND CARE

Standard home, commercial and industrial laundering is appropriate. When laundering instructions are followed, shrinking tolerance is typically 1-3%.

	Machine wash normal: Unlined: max 60° C / 140° F Insulated: max 40° C / 104° F
	Do not bleach
	Iron medium heat: max 150° C / 300° F
	Dry clean: any solvent except trichloroethylene
	Tumble dry normal: low heat

Do not use cleaning agents containing organic soap, chlorine bleach, hydrogen peroxide or any bleaching agent.  
Do not use softeners or starch.

FlashGuard TM is a Red Wing-exclusive flame-resistant fabric. It combines innovative tencel fibers that are comfortable and color-fast, with modacrylic fibers that give the fabric its flame-resistant properties. Altogether the proprietary blend creates a superior fabric that is inherently flame-resistant, lightweight and comfortable.

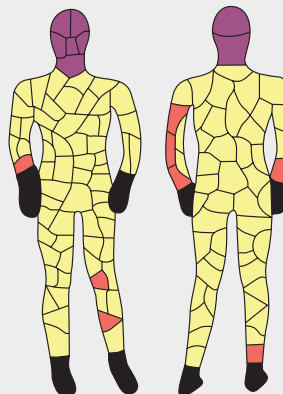
### FEATURES

- FlashGuard TM fabric provides comfort, breathability and flexibility, along with the Absorbs moisture and transfers it away from the body, keeping the wearer dry and comfortable
- Extremely lightweight, performs well in a variety of climates, and is particularly well suited for hot and humid conditions

### FLAME-RESISTANT PROPERTIES

- When exposed to flash flame, FlashGuard TM fabric fibers carbonize and will not melt or drip, forming a barrier to minimize burns to the wearer's skin
- Inherently flame-resistant, with FR properties that last throughout the fabric's lifetime, regardless of washing frequency

### PERFORMANCE



### Total Burn Area 13.11%\* (including head and neck)

	Invalid Sensor
	No Burn
6.56%	Total 2nd Degree Burn
0.00%	3rd Degree Burn (body)
6.56%	3rd Degree Burn (head/neck)
6.56%	Total 3rd Degree Burn**

\* Total Burn Area excluding head/neck not covered by fabric: 6.56%

\*\* 3rd Degree Burn Area excluding head/neck not covered by fabric: 0.00%

Test conducted by the Textile Protection and Comfort Center College of Textiles, North Carolina State University Raleigh, North Carolina, USA



# DALETEC

Comfortable, engineered flame-resistant fabric



Daletec flame-resistant fabric is strong, yet comfortable and it offers the easywearing properties of cotton.

## FEATURES

- Made of cotton, Daletec fabric is soft, pliable and can be comfortably worn directly against the skin.
- Due to its molecular structure, cotton is warmer in cold weather and cooler in hot weather than many synthetic fabrics.
- Cotton fibers are spun to maximize fabric strength and durability.
- Like other natural fabrics, Daletec fabric absorbs and transfers moisture away from the body to keep the wearer dry and comfortable.
- Lightweight and breathable, Daletec fabric performs well in a variety of climate applications. It is especially well-suited for hot or humid applications.

## FLAME-RESISTANT PROPERTIES

- Daletec fabric provides protection against accidental flash fires and heat. It is engineered not to ignite, melt, drip or expose the skin of the wearer.
- Flame-resistant characteristics last throughout the Daletec fabric's lifetime, regardless of washing frequency when care instructions are followed.

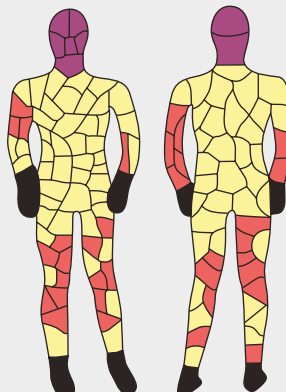
## Total Burn Area 34.43%\* (Including head and neck)

Invalid Sensor	
No Burn	
27.87%	Total 2nd Degree Burn
0.00%	3rd Degree Burn (body)
6.56%	3rd Degree Burn (head/neck)
6.56%	Total 3rd Degree Burn**

\* Total Burn Area excluding head/neck not covered by fabric: 27.87%  
 \*\* 3rd Degree Burn Area excluding head/neck not covered by fabric: 0.00%

Test conducted by the Textile Protection and Comfort Center College of Textiles, North Carolina State University Raleigh, North Carolina, USA

## PERFORMANCE



## Treated FR Fabric FABRIC CODE 15

Weight	Greige 200 g/m2 (5.9 oz./yd2) Finished 220 g/m2 (6.5 oz./yd2)
Blend	98% Cotton, 2% Carbon, Pyrovatex Treated
Weave	Twill 2/1

## COMPLIANCE

Heat and Flame	EN ISO 11612 A1 + A2, B1, C1 (single layer) and A1 + A2, B2, C2, F2 (multi-layer) insulated garments
Electric Arc Flash	IEC 61482-1-2 (class 1)
Anti-static	EN 1149-5
Oeko-Tex®	Oeko-Tex® Standard 100 (sets limits for maximum content of formaldehyde, pesticides, PCBs, heavy metals, azo dye, arylamine flame-retarding agents, phthalates, volatile organic substances, biocides and other substances.)
STANDARD COLORS	Please confirm availability with your Red Wing representative. Special order colors available upon request.

## WASH AND CARE

Standard home, commercial and industrial laundering is appropriate. When laundering instructions are followed, shrinking tolerance is typically 3-5%.

- Machine wash normal:  
Unlined: max 60° C / 140° F  
Insulated: max 40° C / 104° F
  - Do not bleach
  - Iron medium heat:  
max 150° C / 300° F
  - Dry clean:  
any solvent except trichloroethylene
  - Tumble dry normal:  
low heat
- Do not use cleaning agents containing organic soap, chlorine bleach, hydrogen peroxide or any bleaching agent.  
Do not use softeners or starch.  
Do not use acids or sour rinse.

# Protective Clothing

## LIGHTWEIGHT COTTON & POLYESTER/COTTON

Durable and comfortable on the job.

Red Wing industrial workwear garments made from cotton or a polyester/cotton blend deliver comfort and confidence for workers across the globe. These versatile and durable products meet our high standards for superior construction, and are rigorously tested for fit, wear and comfort. With the wearer's needs always our top concern, each garment is designed to meet a specific task. We understand that superior comfort is a necessity.

### COTTON FEATURES

- Soft, lightweight and pliable, cotton fabric can be comfortably worn directly against the skin.
- Extremely versatile, cotton adds warmth in cold weather and also breathes and feels cooler than many synthetic fabrics in warm conditions.
- As a natural fabric, cotton has the ability to attract moisture and transfer it away from the body, keeping the wearer dry and comfortable.
- Predictably durable, cotton offers good wear and performance.
- Lightweight and breathable, 6 oz. (200 g) cotton fabric performs well in a variety of conditions and is particularly well-suited

### POLYESTER/COTTON FEATURES

- Made of a blend that includes durable polyester and comfortable cotton this pliable fabric can be worn directly against the skin or over inner layers as an outer shell.
- Ability to attract moisture and transfer it away from the body, keeping the wearer dry and comfortable.
- Predictably durable, the polyester/cotton blend offers excellent wear and performance.
- Lightweight, breathable and versatile, 6 oz (200 g) polyester/cotton blend fabric performs well in a variety of climate conditions and is particularly well-suited for use in temperate climates.



### Workwear Fit

Purpose-built for the work you do, our industrial workwear is designed to fit so well, so comfortably, that it may not even seem like personal protective equipment. Key measurements necessary to ensure the best possible fit include: Height, Neck, Chest, Waist, and Inseam. Refer to each product listing for specific measurements.

For best fit, measurements should be taken directly from the body. (Room for movement is already calculated into garment dimensions.)

**For ALL Coverall sizing – Please see Page 14**

**For ALL Jackets sizing – Please see Page 17**

### Non-FR Fabric FABRIC CODE 40

Weight	6 oz./yd2 (200 g/m2)
Blend	100% Cotton
Weave	Twill

### COMPLIANCE

Oeko-Tex® Oeko-Tex® Standard 100 (sets limits for maximum content of formaldehyde, pesticides, PCBs, heavy metals, azo dye, arylamine flame-retarding agents, phthalates, volatile organic substances, biocides and other substances.)

### STANDARD COLORS

Please confirm availability with your Red Wing representative. Special order colors available upon request.

### WASH AND CARE

Standard home, commercial and industrial laundering is appropriate. When laundering instructions are followed, shrinking tolerance is typically 3-5% (Fabric Code 50) and 2-3% (Fabric Code 65).

Machine wash normal:  
 ☕ Unlined: max 60° C / 140° F  
 ☕ Insulated: max 40° C / 104° F

✘ Do not bleach

☎ Iron medium heat:  
 max 150° C / 300° F

Ⓟ Dry clean:  
 any solvent except trichloroethylene

☼ Tumble dry normal:  
 low heat

Do not use cleaning agents containing organic soap, chlorine bleach, hydrogen peroxide or any bleaching agent.

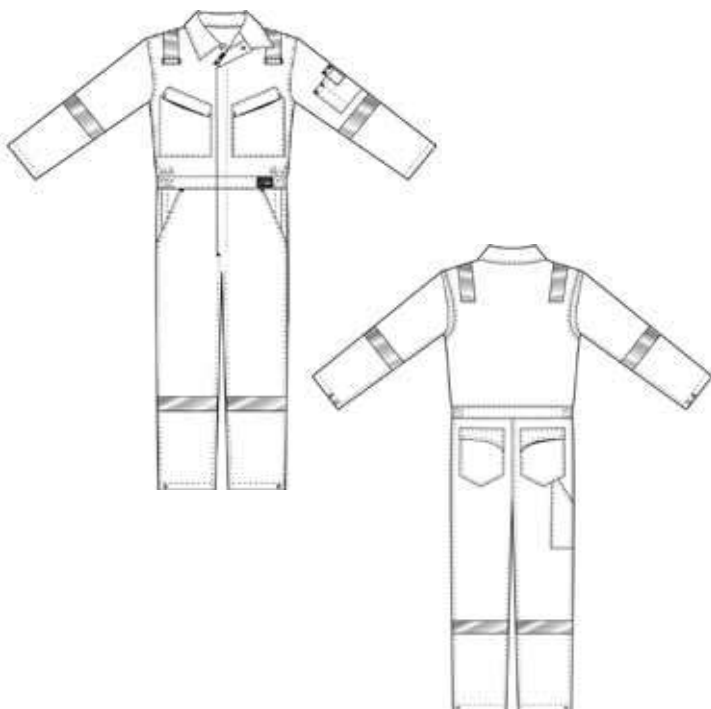
Do not use softeners or starch.



# Coveralls

61111 / 61115

Men's FR and Non-FR Coverall



-  **FLAME RESISTANT**
-  **ANTI-STATIC**
-  **ELECTRIC ARC FLASH**
-  **CATEGORY 2**

**Description:**

This coverall has a classic look and a great fit. It features eight pockets and non-sparking YKK® zips throughout. 100% brass press studs are covered on the inside, so no brass comes in contact with your skin. Major seams are double-stitched and stress points are bar-tacked for strength. 2" (50 mm) reflective FR striping can be added for better visibility and safety.

- Elasticized waistband
- 2" (50mm) wide reflective FR striping around arms, legs and over the shoulders
- Two radio loops
- Concealed two-way, black high-density polyester coil zip with press stud closure
- Concealed press button on cuffs
- One back pocket
- Two chest pockets with flaps, right pocket with a concealed zip closure, left pocket with pen sleeve pocket
- Shoulder pleats for freedom of movement and comfort
- Two side pockets with hidden exterior-to-interior access

**Colors Available:**

-  Red
-  Navy Blue

Product Number	Non Reflective	61111	61115
<b>FABRIC MATERIAL</b>			
Red Wing FlashGuard® TM		●	
Daletec®			●
<b>FABRIC WEIGHT</b>			
6.5 oz / 220g		●	●
<b>INTERNATIONAL STANDARDS</b>			
EN ISO 11612		●	●
EN 1149-5		●	●
NFPA 2112 UL recognized		●	●
IEC 61482-2 (Class 1)		●	●

# Protective Clothing - Coveralls

71111

Men's FR Coverall



-  **FLAME RESISTANT**
-  **ANTI-STATIC**
-  **ELECTRIC ARC FLASH**
-  **CATEGORY 2**

**Description:**

This deluxe coverall fits great and features eight pockets and YKK® non-sparking, brass press studs throughout. 100% brass press studs are covered on the inside so nothing but soft, protective material comes in contact with your skin. Major seams are triple-stitched and stress points are bar-tacked for strength. 1" (25 mm) reflective striping applied to shoulders is equal in length on the front and back.

- Concealed two-way, YKK® brass zips with brass snap closure
- Two chest pockets with concealed zip closure
- Sleeve pocket for mobile phone and pen
- Elasticized waistband
- Two side pockets with hidden exterior-to-interior access through pocket lining
- Action back pleats for freedom of movement and comfort
- Two back pockets, one with flap (right)
- Ruler and tool pocket on right leg
- Internal knee pad pockets (knee pads sold separately)
- Concealed YKK® brass press studs throughout
- 1" (25mm) wide reflective FR striping around arms, legs and over the shoulders

**Colors Available:**



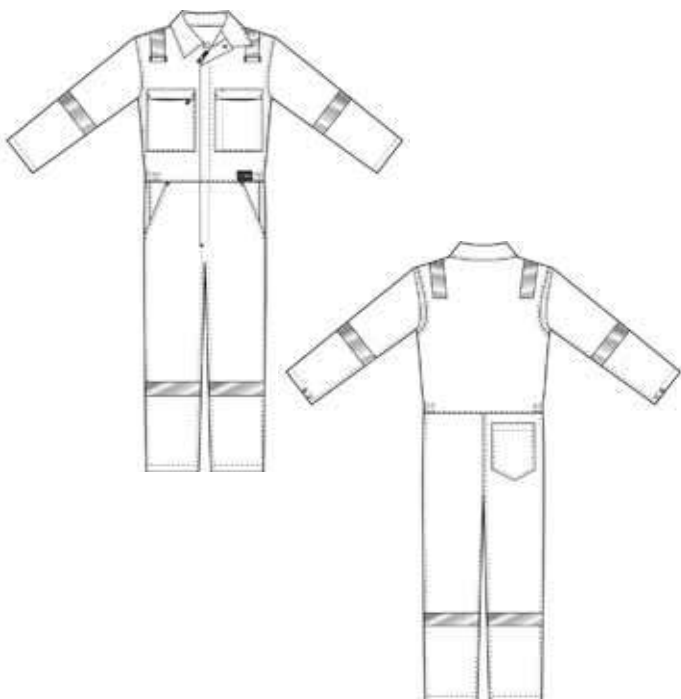
SIZING			
CHEST	EU	INCH / CM	
36	46	34"-36"	86-92 cm
38	48	36"-38"	92-97 cm
40	50	38"-40"	97-102 cm
42	52	40"-42"	102-107 cm
44	54	42"-44"	107-112 cm
46	56	44"-46"	112-117 cm
48	58	46"-48"	117-122 cm
50	60	48"-50"	122-127 cm
52	62	50"-52"	127-132 cm
54	64	52"-54"	132-137 cm
56	66	54"-56"	137-142 cm
HEIGHT	INCH / CM		
Regular	upto 6'1"	upto 185cm	

Product Number	Non Reflective	71111
<b>FABRIC MATERIAL</b>		
Red Wing FlashGuard® TM		●
<b>FABRIC WEIGHT</b>		
6.5 oz / 220g		●
<b>INTERNATIONAL STANDARDS</b>		
EN ISO 11612		●
NFPA 2112 UL Recognized		●
Electric Arc Flash (IEC 61482-1-2)		●
HRC 2 (Hazard Risk Rating)		●
Anti-static (EN 1149-5)		●



61615

## Men's FR Coverall



- FLAME RESISTANT**
- ANTI-STATIC**
- ELECTRIC ARC FLASH**
- CATEGORY 2**

### Description:

This coverall has a great look and fit. It features five pockets and concealed non-sparking YKK® front zipper and 100% brass press stud covered on the inside, so no brass comes in contact with your skin. Major seams are double- or triple-stitched, with stress points bar-tacked for added strength. 2" reflective striping added for better visibility and safety.

- Elasticized waistband
- 2" (50mm) wide reflective FR striping around arms, legs and over the shoulders
- Two radio loops
- Concealed two-way, black high-density polyester coil zip with press stud closure
- Concealed press button on cuffs
- One back pocket
- Two chest pockets with flaps, right pocket with a concealed zip closure, left pocket with pen sleeve pocket
- Shoulder pleats for freedom of movement and comfort
- Two side pockets with hidden exterior-to-interior access

### Colors Available:

- Tan
- Navy Blue

Product Number	Non Reflective	61615
<b>FABRIC MATERIAL</b>		
Datetec®		●
<b>FABRIC WEIGHT</b>		
6.5 oz / 220g		●
<b>INTERNATIONAL STANDARDS</b>		
EN ISO 11612		●
EN 1149-5		●
NFPA 2112 UL recognized		●
IEC 61482-2 (Class 1)		●

**UFCU**

**Men's**

**DUCK**

**Coverall**

**INSULATED**



**MADE IN USA**

The protection you need, the comfort you want. When it's far below freezing and you're needed, you'll be glad you've got full body insulated coverage and all the features you need .

Shell: 100% Cotton 12 oz Premium Duck with durable water repellent finish

Lining: 100% Polyester quilted to 6 oz polyester insulation

Features :

- Two-way heavy duty brass front zipper
- Zip-through Corduroy collar
- Detachable hood with snaps and adjustable draw cord hood
- Loss-proof chest with flap and hook and loop closure
- Upper chest patch pocket with pencil pocket
- Two lower slash pockets
- Knit storm cuffs at inner sleeve hem
- Sleeve Pencil pocket
- Exclusive Full-chap double front leg
- Knee pad pockets
- Ankle to hip heavy duty two way brass zippers
- Turned under hem allows for 3" tall leg extensions
- Raised ankle zip for easy hemming
- Two rear patch pockets
- Hammer loop and ruler pocket
- Back hem reinforced with double layer
- Duck fabric
- Back waist elastic
- Triple stitched
- Brass rivets and barracks at stress points
- Waterproof knee and seat

By Order .....

INHERENT FLAME RETARDANT COVERALL



Model	ANTHEMID 185
Fabric	98% Anthemid + 2% Anti-Static
Brand	ANTHEM
GSM	180 GSM + 5%
Seams Stitch	Aramid Thread
Sizes	XS - 4X
Treatment	OIL   Water Repellent
Additions	HIGH Visibility Reflective Tapes. Customised Logos + Name Plate
Standards	ISO EN 11611, 11612, NFPA 2112 , EN 1149-3, 4 cal\cm2 EN 61482-2
Fabric Feature	Permanent Flame Retardant, Anti-Static. Desert Cool Feature. Cool Breathable. Soft Comfort feel ,Highly durable.  Industrial wash friendly (up to 90 C), Wrinkle-resistant, Shrinkage after 5 washings: not more than 3%,
Zipper:	Front closure with metal zippers and concealed flap Placket Adjustable Flexible Arm Cuffs
Colours	Navy Blue, Light Blue, Royal Blue, Grey, Khaki, Red, Orange Dyed To Match with MOQ.



Garment Made in India  
Designed & Engineered in USA



DESIGN 1



DESIGN 2



DESIGN 3

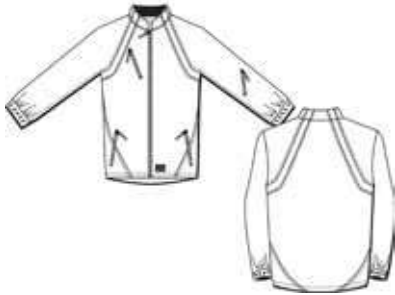


DESIGN 4

# Protective Clothing - Jackets

69007

## Soft Shell Jackets



### Description:

This functional soft-shell jacket is water-resistant and fully-lined for warmth.

### Features:

- High collar
- Draw cords at waist
- Sleeve pocket with zip closure
- Full length zip closure
- Chest pocket with zip closure
- Two side pockets with zip closure
- Elasticized cuffs with thumb holder

### Material:

93% Polyester/7% Spandex

### Colors Available:



76182

## Soft Shell Jackets



### Description:

This functional soft-shell jacket is water-resistant and fully-lined for warmth.

### Features:

- High collar
- Draw cords at waist
- Sleeve pocket with zip closure
- Full length zip closure
- Chest pocket with zip closure
- Two side pockets with zip closure
- Elasticized cuffs with thumb holder

### Material:

93% Polyester/7% Spandex

### Colors Available:





69018

## Soft Shell Jacket



### Description:

This hip-length jacket offers heavy-duty YKK zips and is Polar Fleece lined for warmth. Wind proof (TPU membrane), water repellent, and breathable.

### Features:

- Full length zip closure
- Draw cord at bottom of jacket
- Chest pocket with zip closure
- Two side pockets with zip closure
- High collar with fleece lining
- Wrist sleeve with thumb hole

### Material:

90% Polyester, 10% Cotton

### Colors Available:

 Grey

62360

## Temperature Jacket/ insulated



Insulated

### MATERIAL:

60% Cotton/40% Polyester (Quality 60) 6.5 oz/ yd<sup>2</sup> 220 g/m<sup>2</sup>

### COLORS:

Navy Blue(53), Graphite Gray(56),

### : DESCRIPTION

This hip-length jacket offers a heavy-duty zip and is fully insulated with polyester fiberfill. Major seams are double- or triple- stitched and stress points are bar-tacked for strength

- Double pen pocket on left sleeve
- Two deep, vertical-opening front pockets
- Concealed hood tucks into collar
- Concealed press button on cuffs
- Concealed one-way, black coil high density polyester zips with brass snap closure

 Grey

# Protective Clothing - General Workwear

62140

## TEMPERATE JACKET



This roomy work jacket features seven pockets, adjustable waistband and YKK® non-sparking front zip throughout. All major seams are double or triple-stitched and stress points are bar-tacked for strength. 2"/50 mm wide FR striping for better visibility and safety

### Material

Non-FR Cotton (Quality 40) 6 oz/yd<sup>2</sup>/200 g/m<sup>2</sup> 100%

### Colors

Graphite Gray(56)

### Features

- Adjustable waistband
- Two large side pockets
- Two radio loops
- Concealed press button on cuffs
- Concealed one-way, black high-density polyester coil zip with brass snap closure
- Left sleeve pocket with pen pocket divider, small flap with hook-and-loop closure
- Shoulder pleats for freedom of movement and comfort
- Right chest pocket with snap closure and separate mobile phone pocket



Gray

76167

## FR Temperture Jacket



This roomy work jacket features seven pockets, adjustable waistband and YKK® non-sparking front zip throughout. All major seams are double or triple-stitched and stress points are bar-tacked for strength. 2"/50 mm wide FR striping for better visibility and safety

### Material

International standard EN 531

### Colors

Graphite Gray(56)

### Features

- Large Pleated in the back for freedom and movement and comfort
- Gas Detector and Pen Pocket on the left sleeve
- Concealed Front Zip
- Adjustable waistband
- Two Chest Pocket with flaps, one with separate mobile Phone Pocket
- Adjustable Cuffs
- Two Large side Pocket
- Reflective Tape on shoulders and arms 2 Inch
- 3M Thinsulate - Insulation
- FR Lining



Gray



### Workwear Customization

With our in-house designated team, we are able to help provide our clients with customized corporate branding embroidery and reflective taping of the highest quality on all Protective Clothing including Coveralls, Jackets and Shirts and T-Shirts.

#### Embroidery & Patches

- /// Digital artwork design of company logos and names
- /// Direct Embroidery - Logo and/or Name
- /// Patch Embroidery - Logo and/or Name

\*Front Chest, Back and Shoulder options ALL available.

#### Reflective Taping

2" (50mm) reflective taping option on Arms, Shoulders, Back and Legs.

